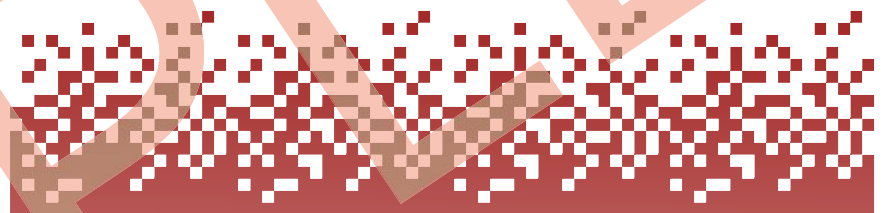




A320

QUICK STUDY GUIDE



SAMPLE

SQS-A320-B1-P1

WWW.AVSOFT.NET



All Rights Reserved

No part of this publication may be reproduced, stored in a retrieval system, transmitted in any form or by any means, electronic, mechanical, photocopying, recording or otherwise - especially translated into other languages - without prior written permission of the publisher. All rights also reserved by restitution in lectures, broadcast, television, magnetic tape and methods of similar means. Each copy produced by a commercial enterprise serves a commercial purpose and is thus subject to remuneration.

This Quick Study Guide (QSG) is meant to be a supplement to the FAA approved aircraft manual and Flight Operations Manual (FOM). The information provided herein is not official, and all materials provided by your company are the final authority.

This QSG has been designed with you, the pilot, in mind. It will help you focus your studies so as to fully prepare you for your checkride. Based on an extensive study of orals at different companies, we have designed a manual that will go over as much of the information that will be covered during a typical oral.

In order to accomplish this goal, every cockpit panel is reviewed. This QSG incorporates an extensive set of typical oral questions. However, this list is not complete since many examiners like to come up with their own questions.

Do not rely solely on this manual to prepare for your oral. Use it in conjunction with your Company's Aircraft Manual.

Most of the information in this QSG will be applicable to your situation. We can configure this QSG to your Company's specifications. Have your training department contact Avsoft, Inc. at 888-254-1213 (US and Canada), or 303-750-5084 (International).

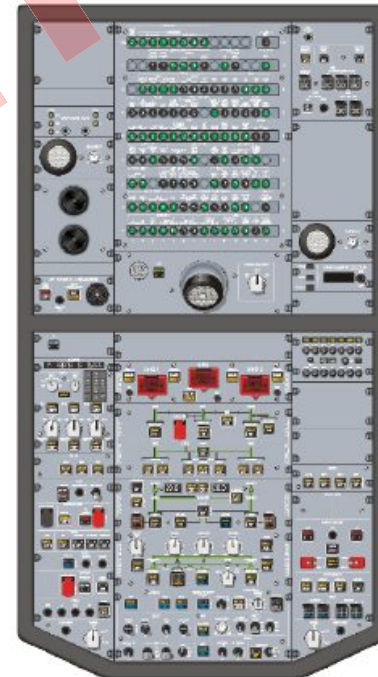
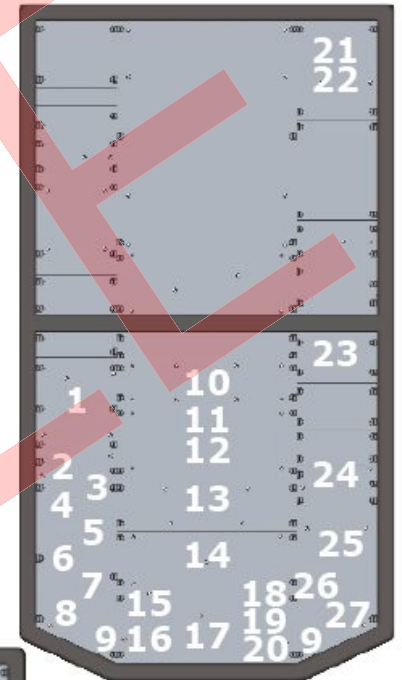
Table of Contents Quick Study Guide - A320

Chapter	Description	Page
One	Overhead	1
Two	Eyebrow	39
Three	Flight Instruments	49
Four	ECAM Screens	69
Five	Center Pedestal	97
Six	Important Concepts	117
Seven	Review Questions	123
Eight	System Diagrams	175
Nine	Acronyms and Abbreviations	185

CHAPTER 1 - OVERHEAD PANEL

Picture Index

#	Description	Page
1.	ADIRS PANEL	5
2.	FLIGHT CONTROL PANEL	6
3.	EMERGENCY EVACUATION SYSTEM	7
4.	EMERGENCY ELECTRICAL POWER	8
5.	GPWS PANEL	9
6.	RCDR PANEL	10
7.	OXYGEN MASK PANEL	11
8.	CALLS PANEL	12
9.	WIPER AND RAIN REPELLENT PANEL	13
10.	FIRE PANEL	14
11.	HYDRAULIC PANEL	16
12.	FUEL PANEL	18
13.	ELECTRICAL PANEL	19
14.	AIR CONDITIONING PANEL	22
15.	ANTI-ICE PANEL	25
16.	CABIN PRESSURE PANEL	26
17.	EXTERNAL LIGHTS PANEL	27
18.	APU PANEL	29
19.	INTERNAL LIGHTS PANEL	30
20.	SIGNS PANEL	31
21.	OXYGEN PANEL	33
22.	HYDRAULIC MAINTENANCE PANEL	33
23.	ACP	34
24.	FLIGHT CONTROL PANEL	34
25.	CARGO HEAT/SMOKE PANEL	35
26.	VENTILATION PANEL	36
27.	ENGINE PANEL	37



OVERHEAD STATION**1. ADIRS PANEL****1. ON BAT Light**

The ON BAT illuminates when one or more IRS (Inertial Reference System) is supplied by the aircraft batteries.

This light also illuminates momentarily at the beginning of a full 10 minute alignment.

2. INERTIAL REFERENCE (IR) Indicator Lights

Steady FAULT: Illuminates (amber) when an IR has failed. In this instance, IR functions cannot be recovered.

Flashing FAULT: Flashes (amber) when navigation function is lost. Attitude and heading information may be recovered in ATT mode.

Steady ALIGN: (White) The Inertial Reference unit is operating normally in the align mode.

2. INERTIAL REFERENCE (IR) INDICATOR LIGHTS continues on next page

This page intentionally left blank

Flashing ALIGN: (White) Flashes when:

1. No present position entered after 10 minutes of alignment (or 3 minutes during fast align)
2. A large difference between in latitude or longitude between shutdown position or measured latitude and the entered position.
3. Inertial Reference alignment fault. This can be caused by aircraft movement during the alignment process.

3. MODE SELECT UNIT (MSU) Knobs

OFF - ADIRU is not powered; ADR and IR information are unavailable.

NAV - Normal mode of operation. IR and ADR information are available. Normal alignment takes 10 minutes. Fast alignment takes 3 minutes and can be selected by turning all three MSU knobs to OFF then NAV with 5 seconds.

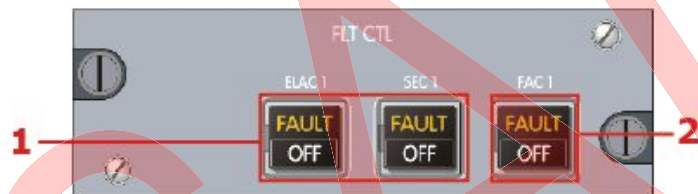
ATT - Backup IR mode which provides only attitude and heading information. ADR information is still available.

4. AIR DATA REFERENCE (ADR) Push Buttons

OFF - Air data output disconnected.

FAULT - Illuminates AMBER in the event of a system failure.

2. FLIGHT CONTROL PANEL



1. FLIGHT CONTROL Push Buttons

ELAC - Elevator and Aileron computer.
SEC - Spoiler and Elevator computer.

ON - Computer is energized.

OFF - Illuminates white. Computer is not energized. Selecting OFF then ON resets the computer.

FAULT - Illuminates AMBER in the event of system failure. Light extinguishes when OFF push button is selected.

Note: ELAC FAULT light illuminates for 8 seconds after initial power up, or after a momentary power interruption.

2. FLIGHT CONTROL Push Buttons

FAC - Flight Augmentation Computer

ON - Computer is energized.

OFF - Illuminates white. Computer is not energized. However, rudder functions are available. Selecting OFF then ON resets the computer.

FAULT - Illuminates AMBER in the event of system failure. Light extinguishes when OFF push button is selected.

3. EMERGENCY EVACUATION SYSTEM



1. COMMAND Switch

ON - (White) Activates evacuation alert. The EVAC light flashes and a horn sounds in the cockpit. EVAC lights flash at the forward and aft Flight Attendant panels. The evacuation tone sounds in the cabin.

Pushing the COMMAND switch a second time cancels the evacuation alert.

2. HORN SHUTOFF Switch

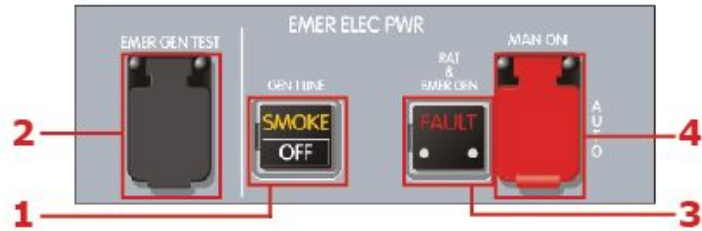
Silences the evacuation horn in the cockpit.

3. CAPT & CAPT/PURS Switch

CAPT & PURS - Allows activation of an evacuation alert from the cockpit OR cabin. Safety wired to Capt/Purs position.

CAPT - Alert activated from the cockpit only. If a cabin CMD button is pressed, the cockpit horn will sound.

4. EMERGENCY ELECTRICAL POWER



1. GEN 1 LINE Push Button

OFF - (White) GEN 1 line contactor is open. One fuel pump in each wing tank continues to receive power from Gen 1. Gen 2 powers AC bus 1 (for smoke drill).

SMOKE - (Amber) Smoke has been detected in the avionics ventilation duct.

2. EMERGENCY GEN TEST Push Button

For maintenance personnel only.

3. R.A.T. EMERGENCY GENERATOR FAULT Light

FAULT - (Red) This is the only red fault light in the A319 cockpit. Illuminates to indicate that the emergency generator is NOT supplying power when:

1. AC BUS 1 and 2 are NOT powered and
2. The aircraft is in flight with the nose gear up.

4. RAM AIR TURBINE (RAT) EMERGENCY GENERATOR MAN ON Push Button

AUTO - (Guarded position) RAT automatically extends when AC BUS 1 and 2 are not powered AND the airspeed is above 100 knots.

PUSH - Manually extends the RAT.